

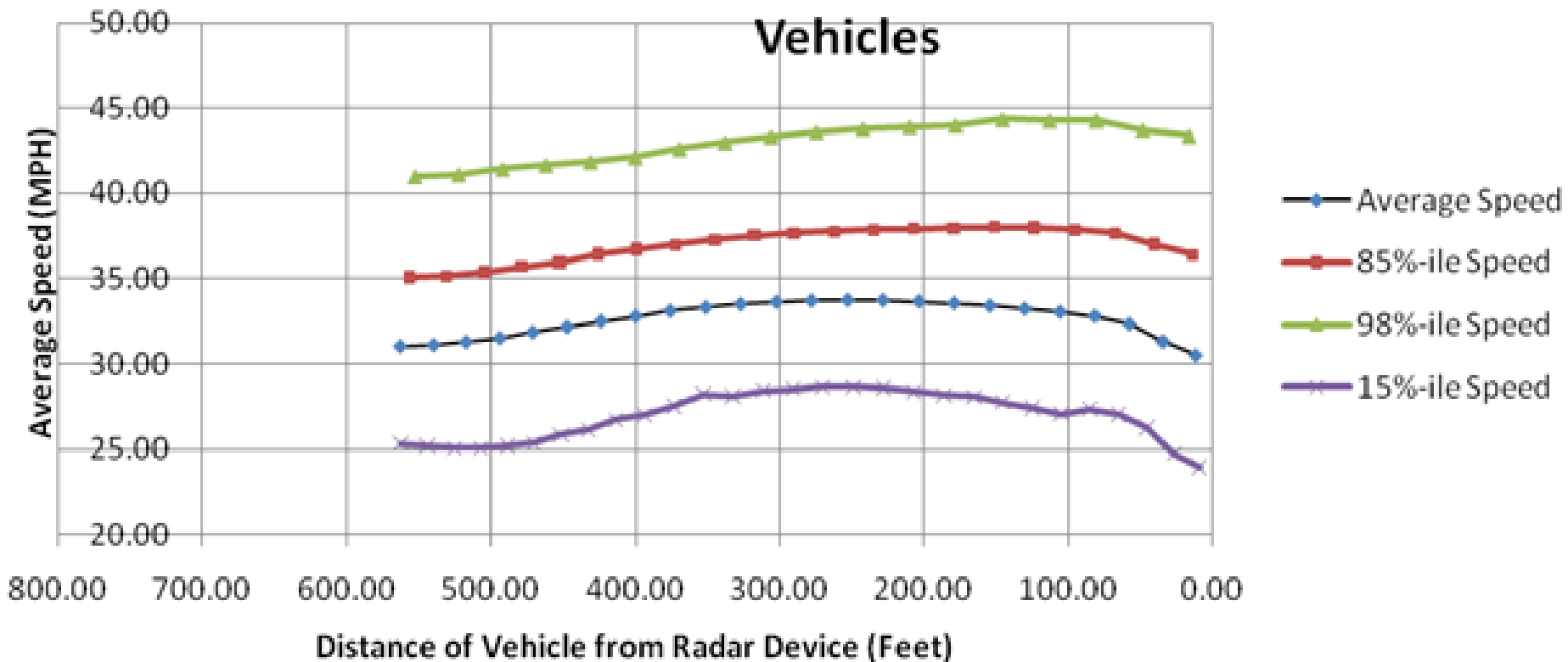
Average Speed on Wieuca Road 1/13/10 through 1/25/10 by Time of Day and Day of Week

Average Speed		Column Labels							Grand
Row Labels	1-Mon	2-Tue	3-Wed	4-Thu	5-Fri	6-Sat	7-Sun	7-Sun	Total
0:00	32.0	31.5	33.2	32.7	32.4	31.7	31.1	27.9	32.0
1:00	31.9	34.2	33.6	33.5	34.0	32.1	32.3	29.8	32.9
2:00	35.2	33.8	34.5	33.2	33.6	32.3	33.5	30.6	33.5
3:00	32.5	27.7	30.9	30.1	35.1	33.8	33.5	29.6	32.6
4:00	32.0	27.0	28.6	33.4	30.8	34.3	34.2	29.4	32.1
5:00	32.1	32.7	34.0	31.0	32.1	31.5	31.4	28.8	32.1
6:00	32.7	31.9	32.9	31.8	31.8	32.3	30.0	25.6	32.2
7:00	31.9	31.1	31.6	30.9	31.9	33.9	33.3	29.4	31.6
8:00	32.9	32.7	33.3	31.9	32.3	33.3	33.2	29.3	32.6
9:00	33.3	33.2	31.6	30.0	33.0	32.5	33.6	29.3	32.2
10:00	32.8	32.2	32.4	31.3	32.8	32.1	33.2	28.6	32.3
11:00	32.7	32.3	31.5	32.2	32.1	32.4	32.9	28.8	32.2
12:00	33.7	32.3	31.5	32.6	33.3	33.0	33.0	29.3	32.7
13:00	33.9	32.8	31.0	32.8	32.5	32.5	33.5	28.5	32.7
14:00	32.1	31.9	29.7	32.1	31.8	33.0	31.8	21.7	31.6
15:00	32.2	31.9	29.3	31.5	31.6	31.9	31.3	20.6	31.1
16:00	32.2	31.7	30.6	32.5	30.8	32.2	31.1	20.1	31.5
17:00	32.3	32.4	32.0	32.3	32.0	32.3	32.2	24.0	32.1
18:00	31.9	31.9	31.8	31.9	32.3	32.4	31.3	23.3	31.8
19:00	32.5	31.8	32.5	32.5	32.7	32.1	31.8	22.7	32.2
20:00	33.2	31.9	32.5	32.6	32.2	32.0	32.6	25.7	32.4
21:00	31.9	32.6	32.1	32.7	32.0	31.8	32.4	25.4	32.2
22:00	32.7	31.4	32.2	32.4	32.5	31.7	33.1	29.0	32.3
23:00	33.6	30.5	31.2	32.3	31.3	32.2	33.0	29.1	32.0
Grand Total	32.7	32.1	31.5	32.0	32.2	32.4	32.2	24.1	32.1

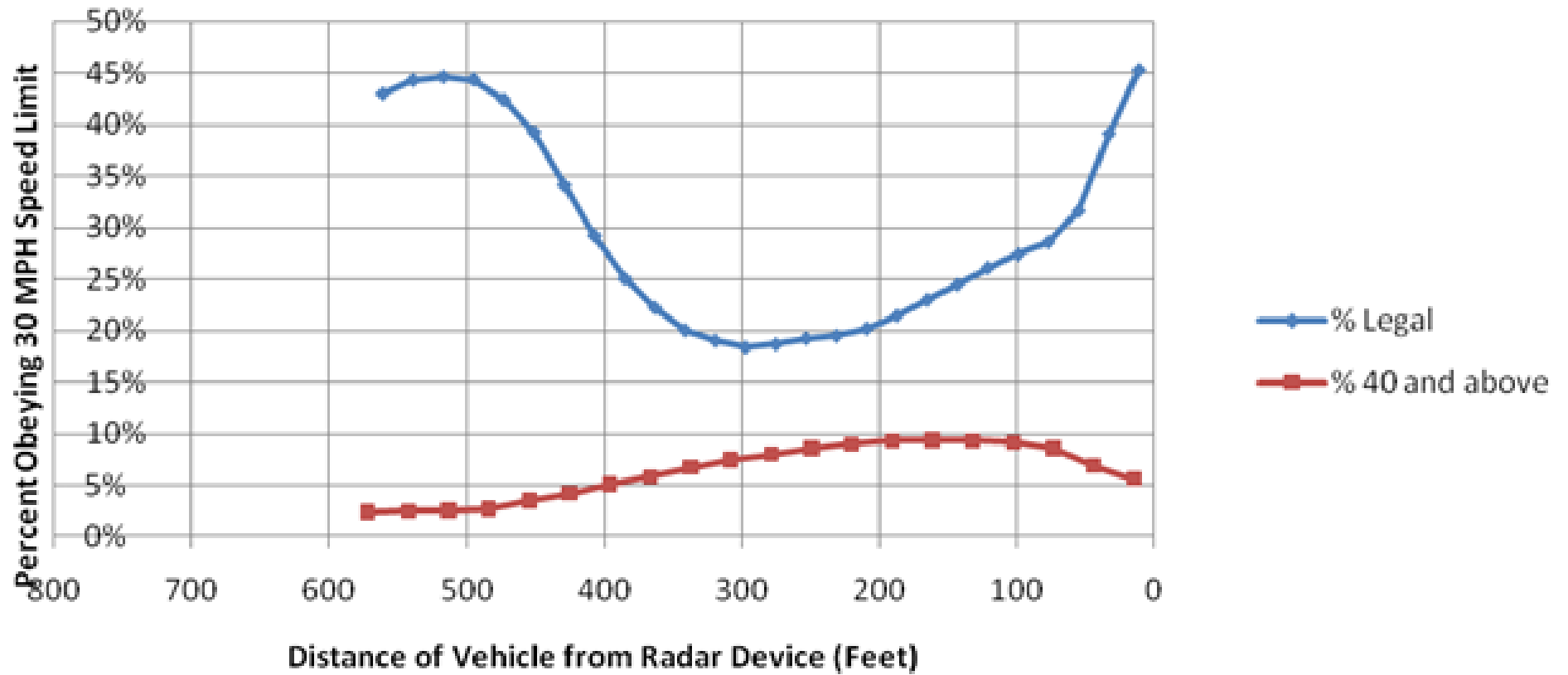
Speed Limit 30
(Northbound traffic shown)

Average Speed of 10,871 Northbound Wieuca Road Vehicles

Vehicles



% at/below 30 MPH and % at 40 MPH-up of 10,871 Northbound Wieuca Road Vehicles



Wieuca Traffic 1/13/10 through 1/25/10

Approximate Count of Vehicles by Hour by Recorded Speed

	0:01	1:00	2:00	3:00	4:00	5:00	6:00	7:00	8:00	9:00	10:00	11:00	12:00	13:00	14:00	15:00	16:00	17:00	18:00	19:00	20:00	21:00	22:00	23:00
18	1	1	0	1	0	1	1	4	3	5	4	5	4	6	9	10	12	6	6	5	3	3	2	3
19	1	1	1	1	1	1	1	4	4	5	6	6	6	6	10	11	12	6	7	5	3	4	3	3
20	2	1	1	1	1	0	2	6	5	6	6	6	7	7	12	13	12	8	9	5	6	4	3	4
21	3	1	1	1	1	2	3	8	7	8	8	9	9	9	14	16	16	12	12	5	6	5	5	5
22	5	1	1	1	1	2	4	11	9	10	12	13	13	16	21	25	21	17	18	9	8	8	5	6
23	5	2	1	2	2	2	6	16	12	14	16	19	18	21	29	30	32	23	26	16	13	15	12	11
24	7	3	2	2	2	2	7	23	17	21	25	27	26	27	34	41	39	34	33	23	17	21	15	13
25	9	5	3	4	2	3	8	30	24	25	35	38	36	34	45	49	50	41	43	32	23	27	19	17
26	14	7	4	6	3	4	11	42	36	38	45	47	46	45	63	70	66	61	57	43	32	31	28	22
27	20	11	5	5	4	7	19	53	50	54	59	63	65	62	82	92	88	83	85	60	44	38	36	33
28	24	14	8	8	6	10	23	74	74	75	80	86	88	83	119	131	133	130	126	91	63	56	49	42
29	28	14	9	10	7	16	29	96	90	89	96	109	108	106	141	155	158	178	161	120	86	71	60	49
30	28	16	10	11	8	18	40	103	105	101	111	131	123	123	149	176	184	212	197	129	97	79	62	47
31	30	15	11	12	9	17	43	115	116	112	122	155	144	143	171	205	208	245	218	150	111	86	72	52
32	31	19	11	12	7	19	44	121	138	135	134	169	182	172	186	213	254	283	239	174	121	99	76	57
33	34	20	11	12	10	16	42	126	159	143	145	189	204	196	195	235	260	313	251	186	130	106	83	60
34	31	20	12	9	10	16	33	110	141	141	147	185	209	197	195	211	248	287	232	191	125	104	86	50
35	26	15	9	10	10	14	28	85	129	122	131	161	183	173	164	173	202	234	197	155	104	94	73	47
36	22	16	8	10	7	10	19	71	110	102	101	128	155	153	139	135	172	196	159	131	93	80	61	40
37	20	16	9	11	6	8	20	56	91	87	92	104	138	132	121	115	136	143	117	103	81	65	49	38
38	16	12	7	8	4	6	17	38	73	69	72	79	107	107	99	82	99	102	84	77	59	51	39	26
39	14	10	7	6	3	5	10	30	48	53	52	53	70	73	62	57	59	65	52	48	43	34	31	21
40	9	6	5	5	2	3	9	19	32	35	32	32	45	45	35	31	38	39	28	30	26	18	20	14
41	6	4	5	4	1	3	6	13	22	23	19	21	29	30	20	19	21	22	17	18	19	13	10	9
42	4	3	4	3	1	1	5	8	15	17	18	11	18	17	15	11	11	12	11	11	11	8	7	6
43	2	2	4	3	1	2	3	6	9	11	9	7	13	9	9	8	7	6	6	6	6	7	5	6
44	3	2	3	3	2	1	4	4	6	6	6	5	6	5	5	4	4	4	2	3	4	5	3	3
45	2	2	1	2	0	1	2	3	3	3	2	2	3	3	3	2	2	2	1	2	2	2	2	2
46	2	0	1	1	0	1	2	1	1	2	1	2	1	1	1	1	1	1	1	1	1	1	1	1
47	1	0	1	0	0	0	1	1	2	1	1	1	1	1	1	0	1	0	0	1	1	1	1	1

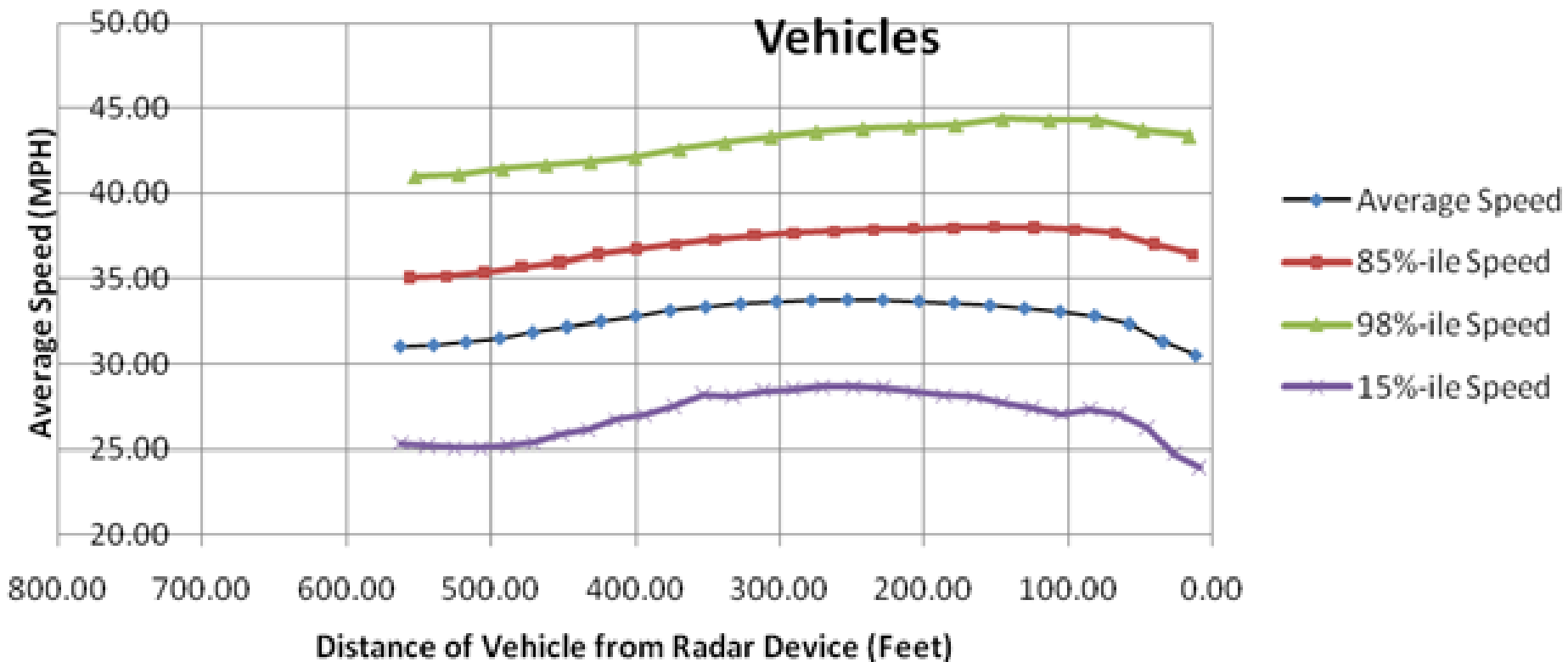
Speed Limit 30
(Northbound traffic shown)

Wieuca Traffic 1/13/10 through 1/25/10 Percentiles by Hour of Recorded Speeds

	0:01	1:00	2:00	3:00	4:00	5:00	6:00	7:00	8:00	9:00	10:00	11:00	12:00	13:00	14:00	15:00	16:00	17:00	18:00	19:00	20:00	21:00	22:00	23:00
18	2%	1%	1%	4%	3%	2%	1%	2%	1%	3%	2%	2%	1%	1%	3%	4%	4%	1%	2%	2%	2%	2%	1%	1%
19	2%	1%	2%	4%	4%	3%	1%	2%	2%	3%	2%	2%	2%	2%	4%	4%	4%	2%	2%	2%	2%	2%	1%	2%
20	3%	2%	2%	4%	4%	3%	2%	2%	2%	3%	3%	2%	2%	2%	4%	5%	5%	2%	2%	2%	2%	2%	2%	2%
21	3%	2%	3%	5%	5%	4%	2%	3%	2%	4%	3%	3%	2%	3%	5%	6%	5%	2%	3%	3%	3%	3%	2%	3%
22	5%	2%	4%	6%	6%	5%	3%	4%	3%	5%	4%	3%	3%	3%	6%	7%	6%	3%	4%	3%	3%	3%	3%	4%
23	6%	3%	5%	7%	7%	5%	5%	5%	4%	6%	5%	4%	4%	4%	7%	8%	7%	4%	5%	4%	4%	5%	4%	5%
24	8%	4%	6%	8%	9%	6%	6%	7%	5%	7%	6%	6%	5%	6%	9%	10%	9%	5%	6%	5%	5%	7%	6%	7%
25	10%	6%	8%	10%	11%	8%	8%	9%	6%	9%	9%	8%	7%	7%	11%	12%	11%	7%	8%	7%	7%	9%	8%	10%
26	13%	9%	10%	14%	13%	10%	10%	13%	9%	11%	11%	10%	9%	10%	14%	15%	13%	9%	10%	9%	9%	12%	11%	13%
27	18%	14%	13%	17%	17%	13%	15%	17%	12%	14%	15%	14%	12%	13%	17%	18%	16%	12%	14%	12%	13%	15%	15%	17%
28	24%	20%	19%	22%	22%	19%	20%	22%	17%	19%	20%	18%	16%	17%	23%	24%	21%	16%	19%	17%	17%	20%	20%	23%
29	31%	26%	24%	28%	28%	27%	26%	30%	22%	25%	26%	24%	22%	22%	29%	30%	27%	23%	25%	24%	24%	26%	26%	31%
30	38%	32%	30%	34%	35%	36%	35%	38%	29%	32%	33%	31%	28%	28%	36%	38%	34%	30%	34%	31%	31%	33%	33%	37%
31	45%	38%	37%	42%	43%	45%	45%	47%	37%	39%	40%	39%	34%	35%	44%	46%	42%	39%	43%	39%	39%	40%	41%	45%
32	53%	46%	44%	49%	49%	55%	55%	56%	46%	47%	48%	48%	43%	44%	52%	55%	52%	49%	52%	48%	48%	49%	49%	53%
33	61%	55%	51%	55%	57%	63%	64%	66%	56%	57%	57%	58%	53%	53%	61%	65%	62%	60%	63%	58%	57%	58%	58%	62%
34	68%	63%	59%	61%	66%	71%	71%	74%	65%	66%	67%	68%	63%	63%	70%	73%	71%	70%	72%	68%	67%	67%	67%	69%
35	75%	70%	64%	67%	75%	79%	78%	81%	73%	74%	75%	76%	72%	71%	77%	81%	79%	79%	80%	77%	74%	75%	75%	76%
36	80%	76%	69%	73%	81%	84%	82%	86%	80%	80%	81%	83%	79%	79%	83%	86%	86%	86%	87%	84%	81%	82%	82%	82%
37	85%	83%	75%	79%	86%	88%	87%	90%	86%	86%	87%	89%	86%	86%	89%	91%	91%	91%	92%	89%	87%	88%	87%	87%
38	89%	88%	80%	84%	90%	91%	90%	93%	91%	90%	91%	93%	91%	91%	93%	94%	95%	95%	95%	93%	92%	92%	91%	91%
39	92%	92%	84%	88%	93%	93%	93%	96%	94%	94%	94%	96%	94%	94%	96%	97%	97%	97%	97%	96%	95%	95%	94%	94%
40	95%	94%	87%	90%	94%	95%	95%	97%	96%	96%	96%	97%	97%	97%	98%	98%	98%	98%	98%	98%	97%	97%	97%	96%
41	96%	96%	90%	93%	95%	96%	96%	98%	98%	97%	97%	99%	98%	98%	98%	99%	99%	99%	99%	99%	98%	98%	98%	97%
42	97%	97%	93%	94%	96%	97%	97%	99%	99%	99%	98%	99%	99%	99%	99%	99%	99%	99%	100%	99%	99%	98%	99%	98%
43	98%	98%	95%	96%	98%	98%	98%	99%	99%	99%	99%	99%	99%	99%	99%	100%	100%	100%	100%	99%	99%	99%	99%	99%
44	98%	98%	97%	97%	99%	98%	99%	100%	100%	100%	99%	100%	100%	100%	100%	100%	100%	100%	100%	100%	100%	100%	99%	99%
45	99%	99%	98%	98%	99%	98%	99%	100%	100%	100%	99%	100%	100%	100%	100%	100%	100%	100%	100%	100%	100%	100%	100%	99%
46	99%	99%	99%	99%	99%	99%	99%	100%	100%	100%	100%	100%	100%	100%	100%	100%	100%	100%	100%	100%	100%	100%	100%	100%
47	99%	100%	99%	99%	100%	99%	100%	100%	100%	100%	100%	100%	100%	100%	100%	100%	100%	100%	100%	100%	100%	100%	100%	100%

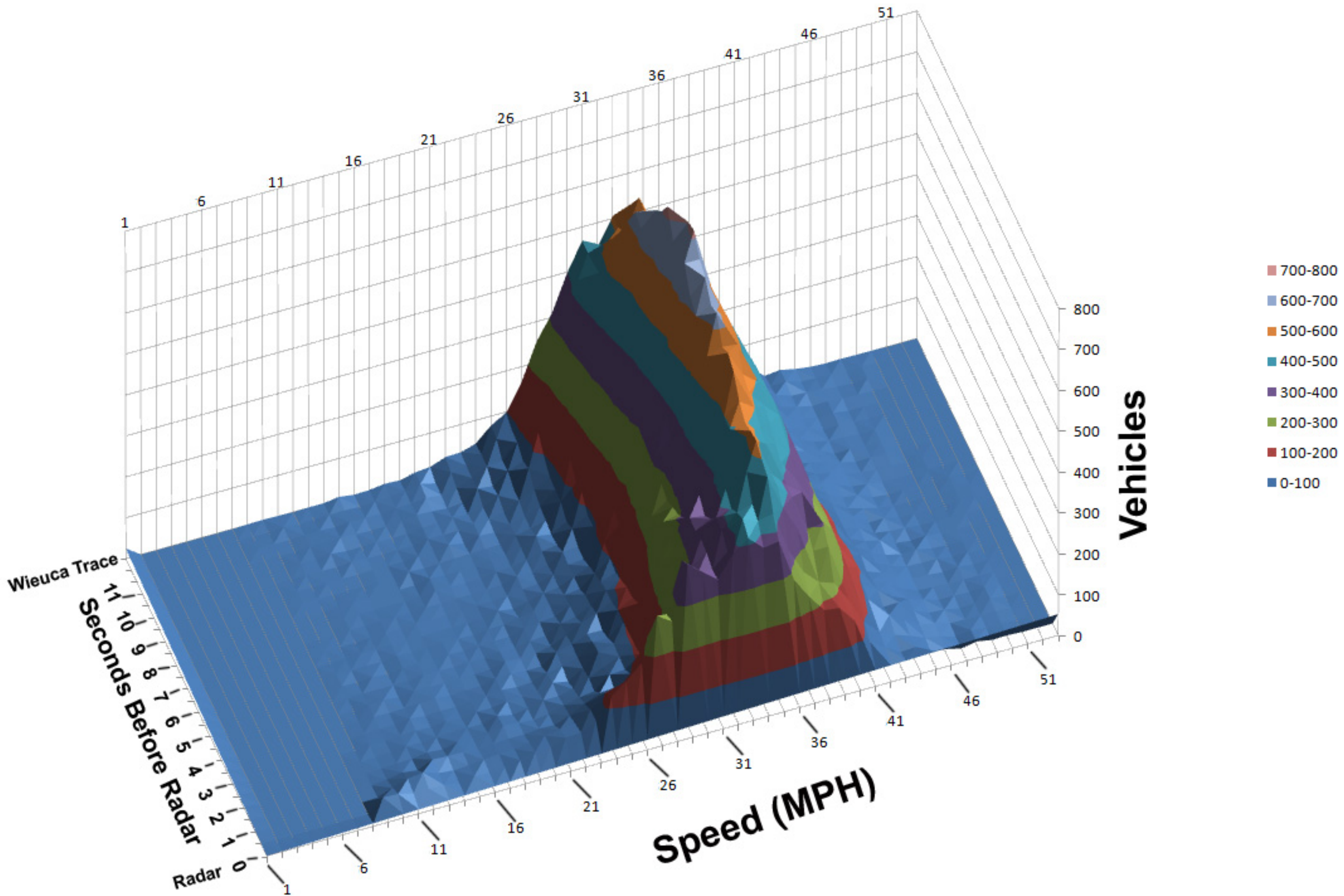
Speed Limit 30
(Northbound traffic shown)

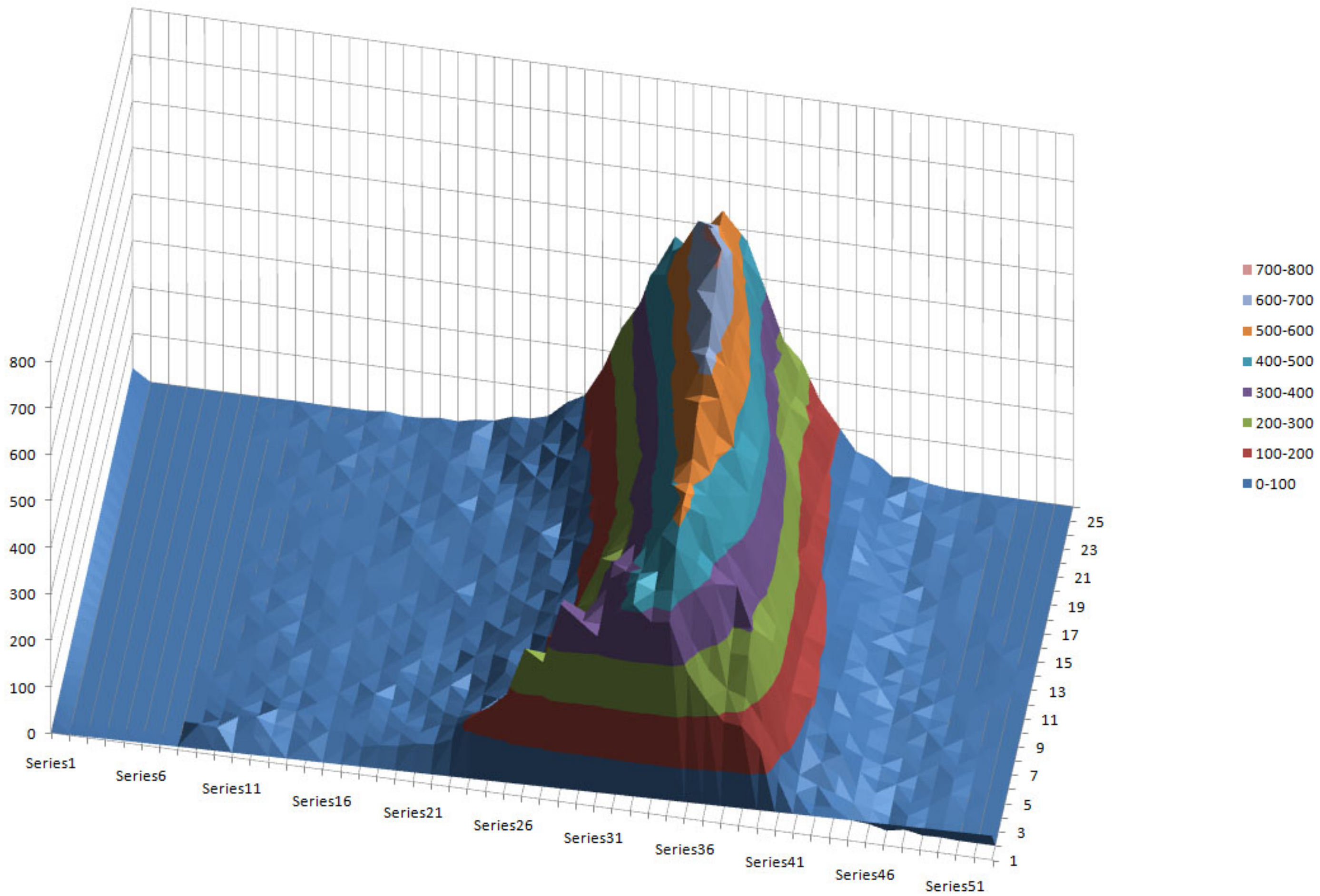
Average Speed of 10,871 Northbound Wieuca Road Vehicles



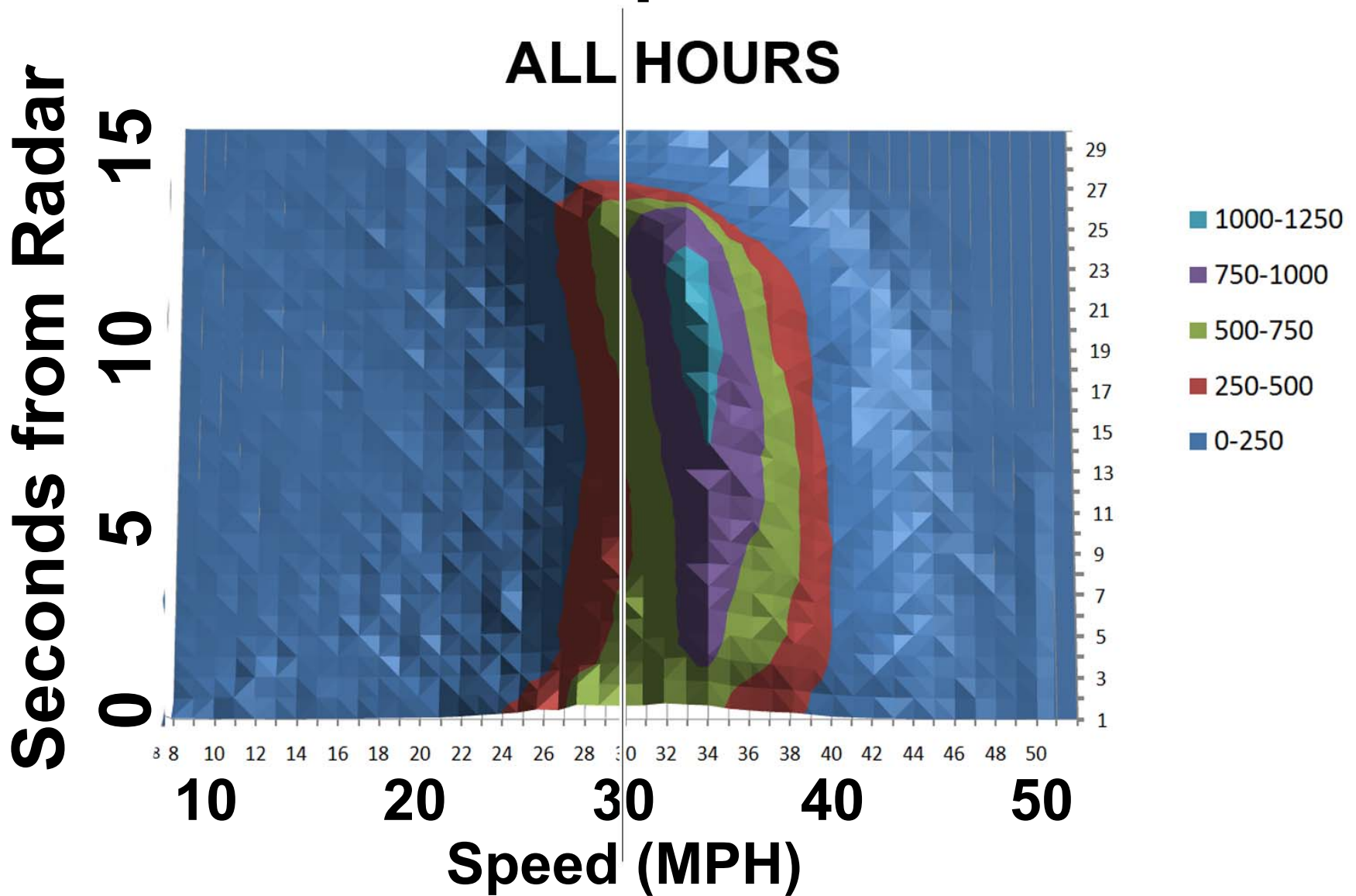
Vehicle Speed vs Seconds Before Radar

5,423 Northbound Vehicles

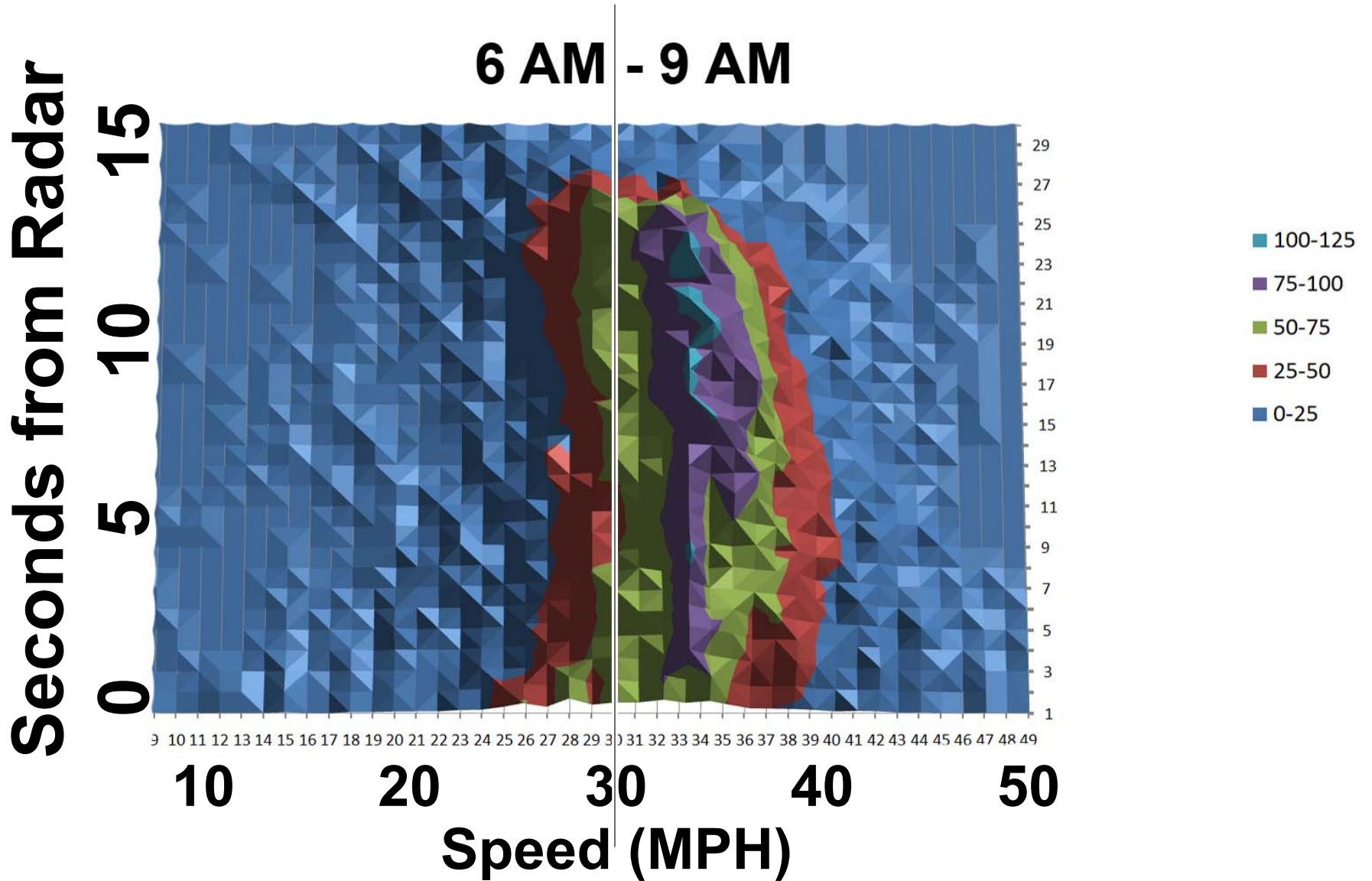




Wieuca Road Speed Distribution



Wieuca Road Speed Distribution

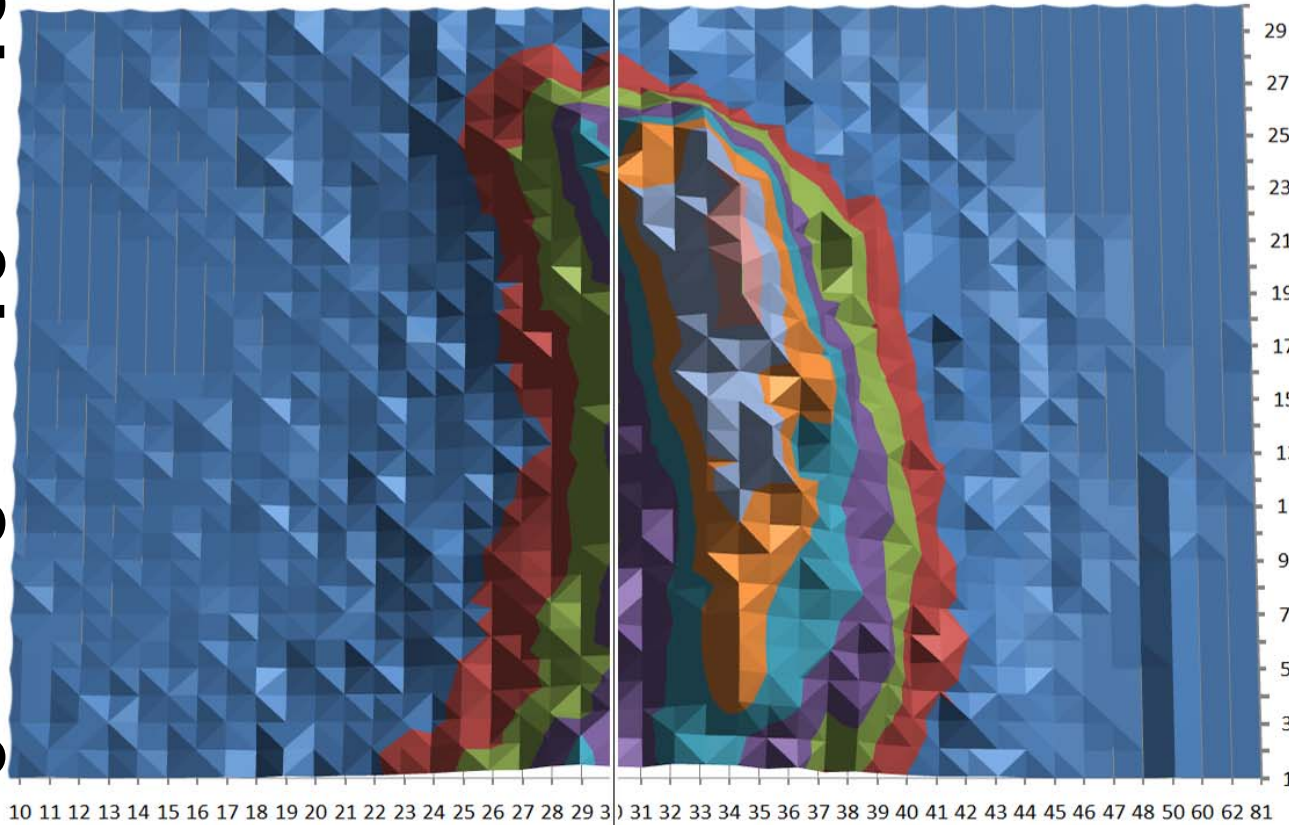


Wieuca Road Speed Distribution

9 AM - 12 PM

Seconds from Radar

15
10
5
0



10 11 12 13 14 15 16 17 18 19 20 21 22 23 24 25 26 27 28 29 30 31 32 33 34 35 36 37 38 39 40 41 42 43 44 45 46 47 48 50 60 62 81

10

20

30

40

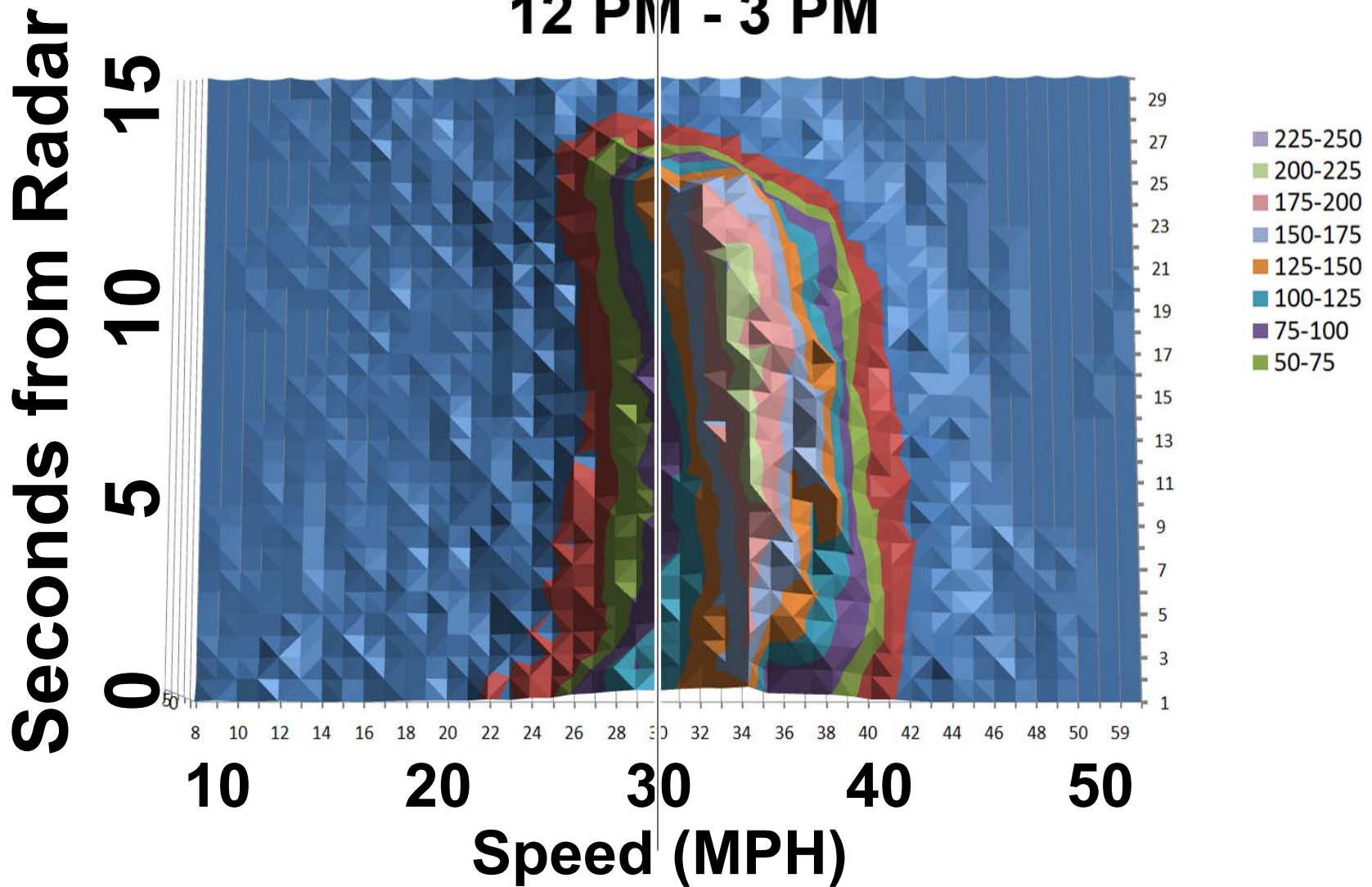
50

Speed (MPH)

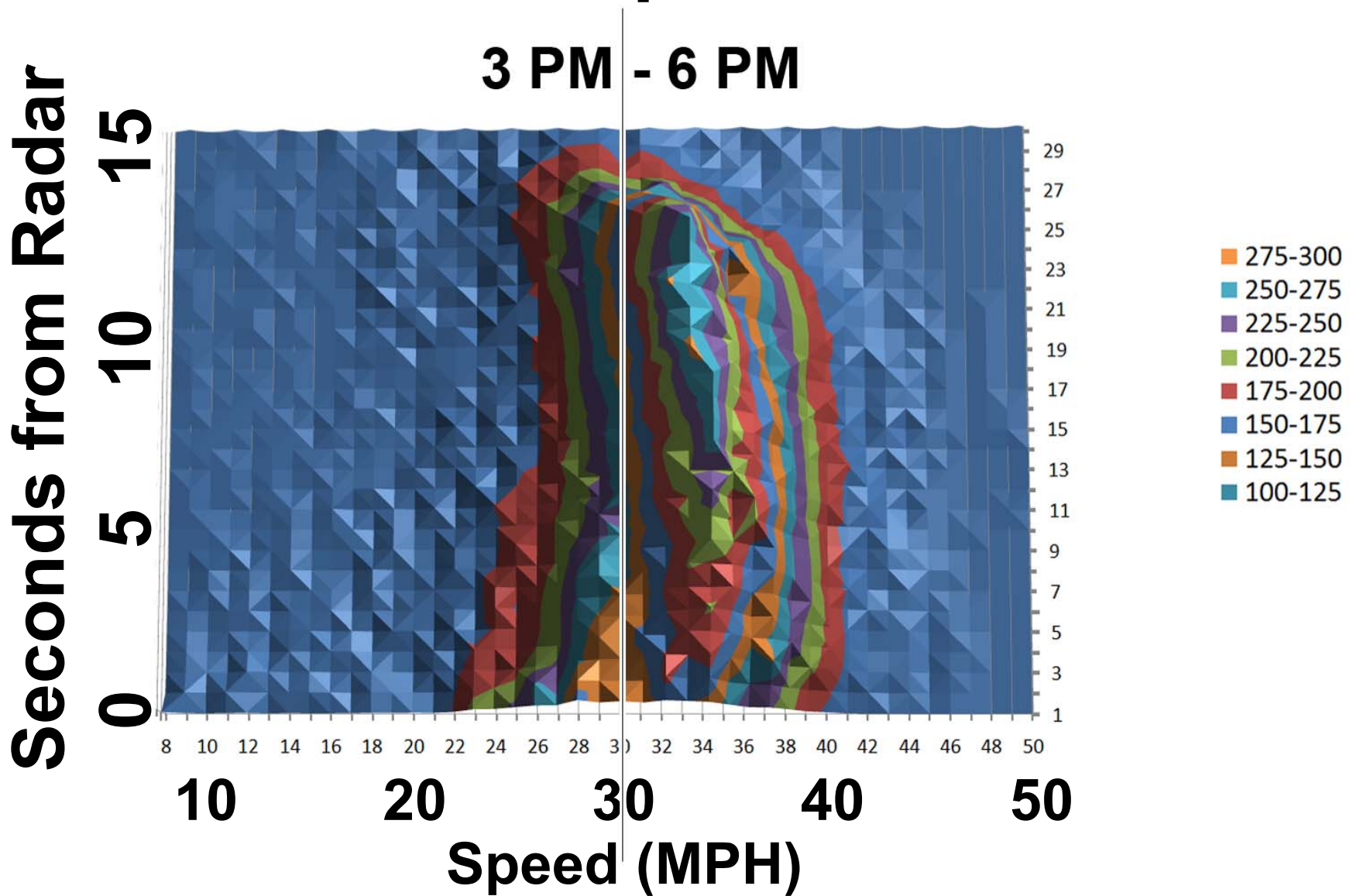
- 200-225
- 175-200
- 150-175
- 125-150
- 100-125
- 75-100
- 50-75
- 25-50

Wieuca Road Speed Distribution

12 PM - 3 PM

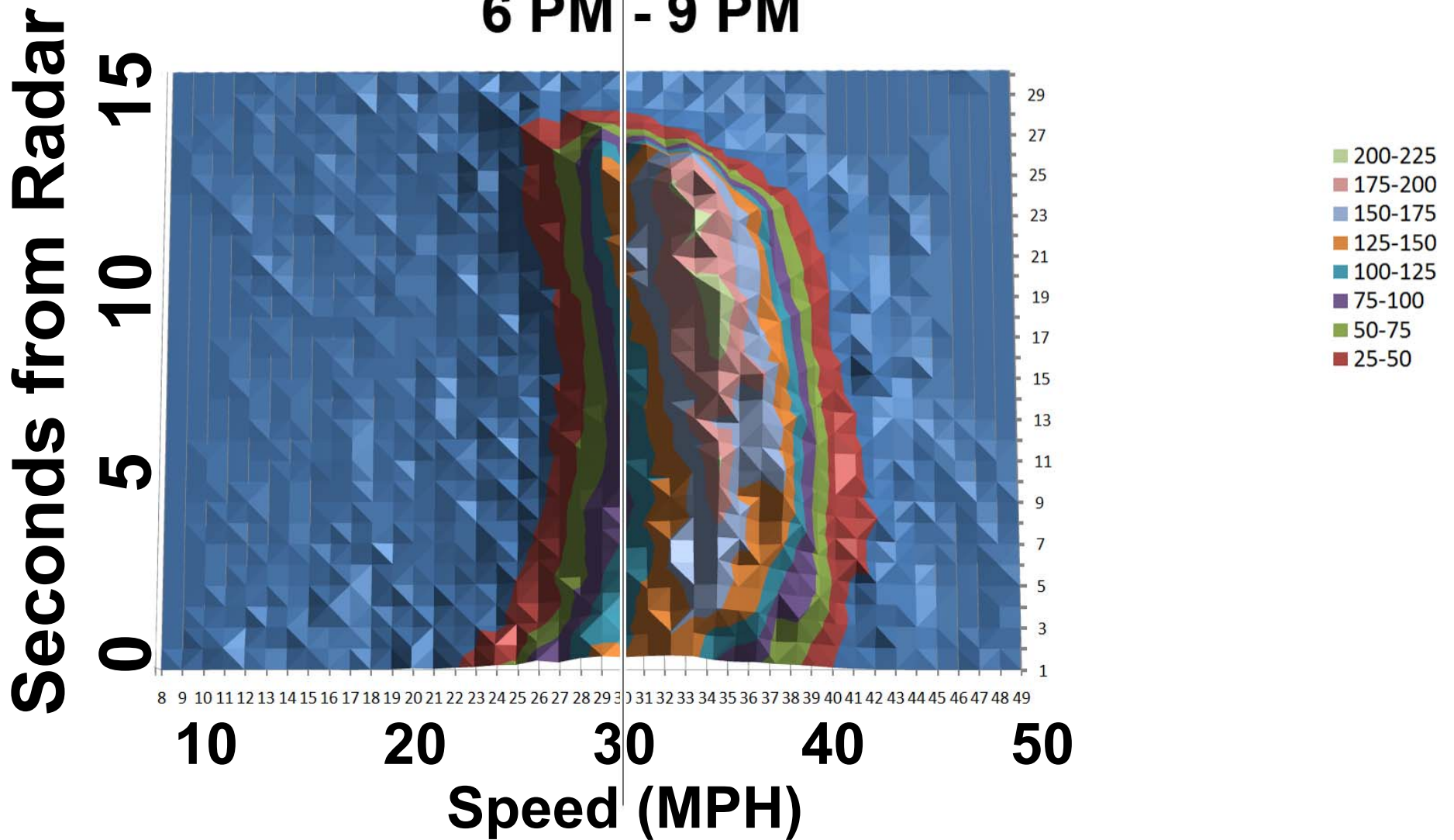


Wieuca Road Speed Distribution



Wieuca Road Speed Distribution

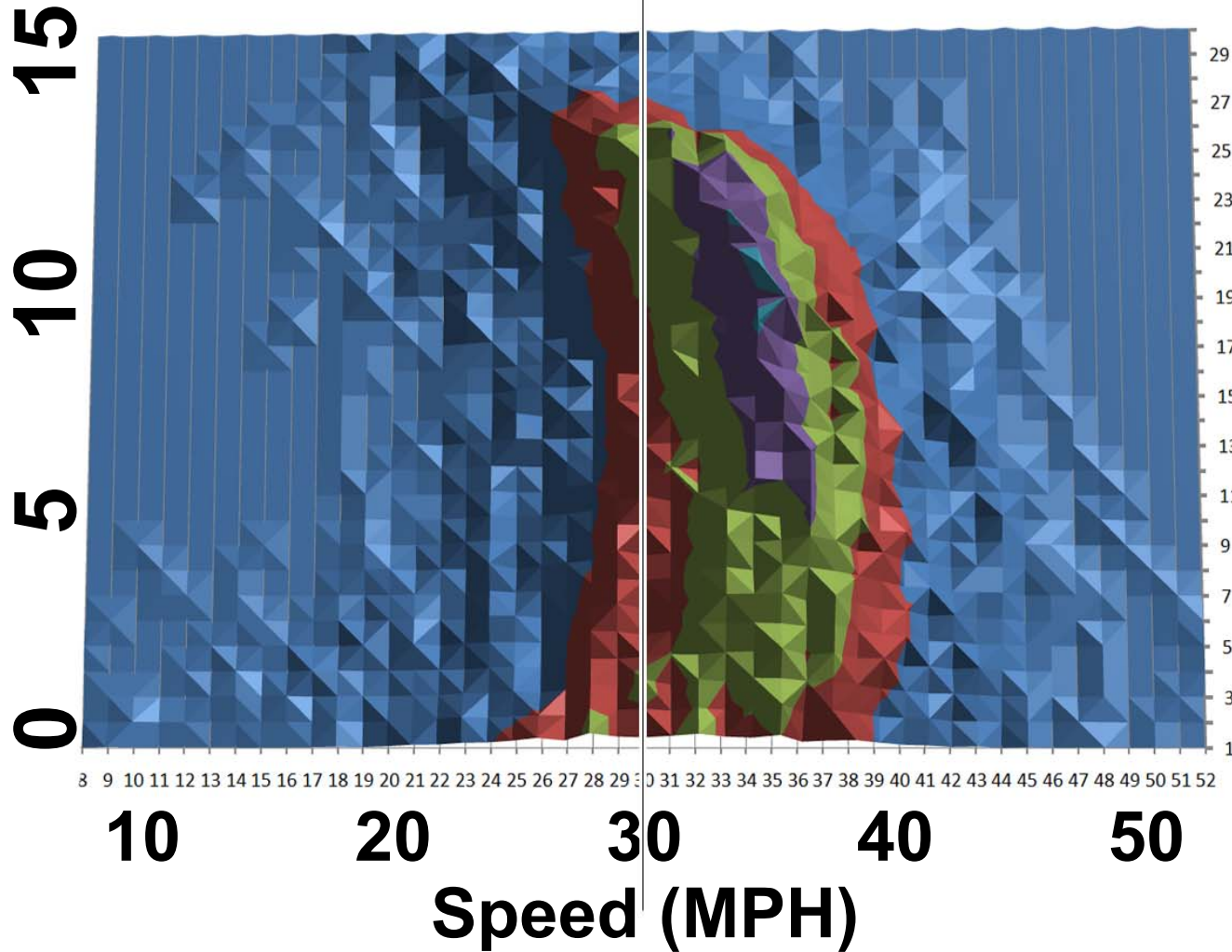
6 PM - 9 PM



Wieuca Road Speed Distribution

9 PM - 12 AM

Seconds from Radar



Wieuca Road Speed Distribution

12 AM - 3 AM

Seconds from Radar

15
10
5
0

10

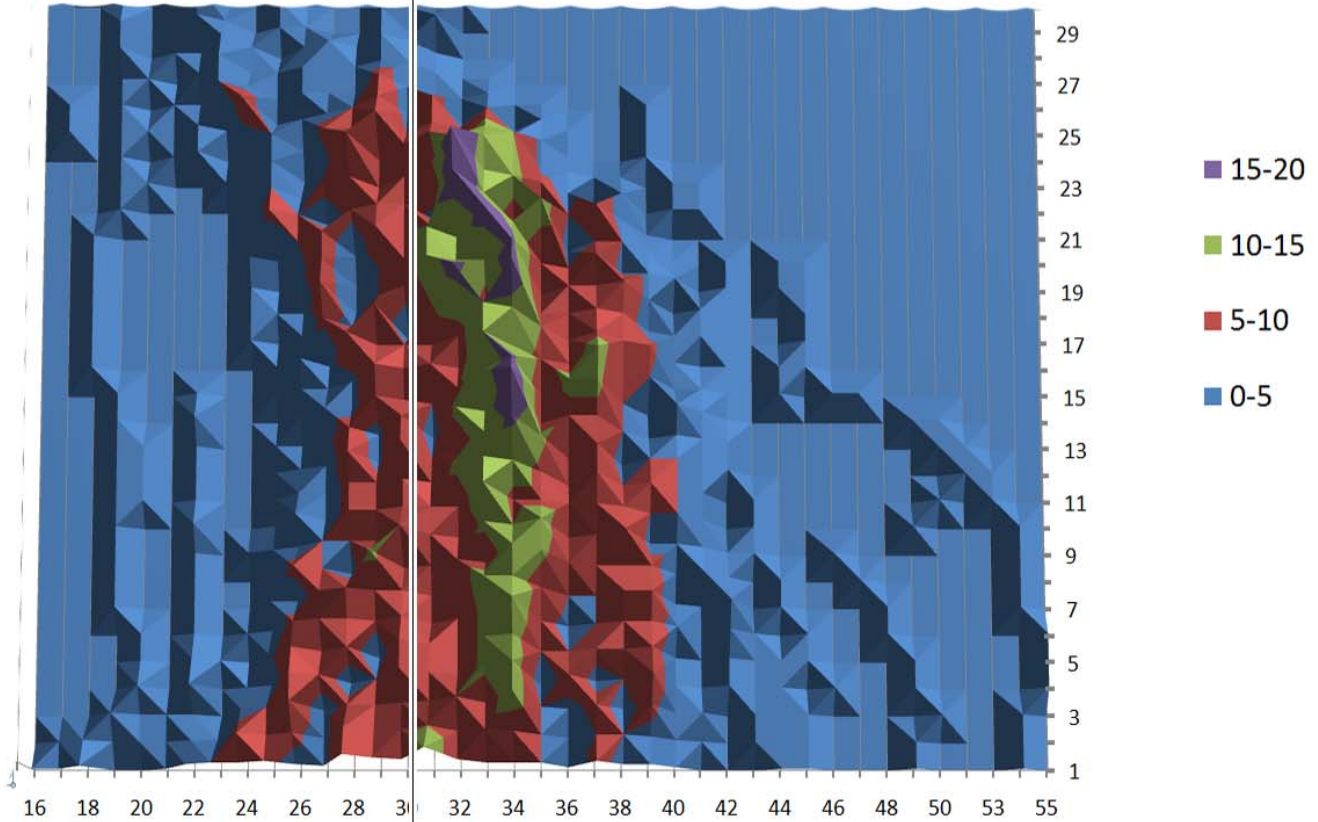
20

30

40

50

Speed (MPH)



Wieuca Road Speed Distribution

Seconds from Radar

15
10
5
0

3 AM - 6AM

